

Acher - Renchtal - Musikverband

JMLA - Silber

Dur-Tonleitern in der Vorspiel-Fassung
mit den dazugehörigen Moll-Tonleitern
(Für das gemeinsame Spiel aller JMLA-TN)

zusammengestellt von
Rudolf Heidler (2021)
Verbandsdirigent

Tuba in C

$\text{♩} = 76 - 112$

1

5

Moll-natürlich

9

Moll-harmonisch

13

Moll melodisch

17

2

21

Moll-natürlich

25

Moll-harmonisch

29

Moll melodisch

33

3



Moll-natürlich

37



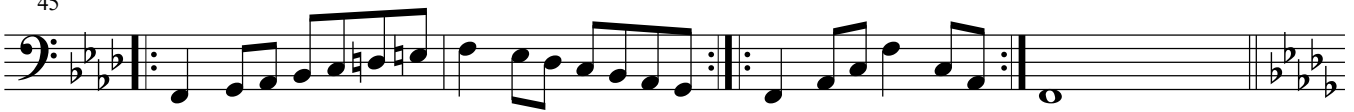
Moll-harmonisch

41



Moll melodisch

45



49

4



Moll-natürlich

53



Moll-harmonisch

57



Moll melodisch

61



65

5



Moll-natürlich

69



Moll-harmonisch

73



77

Moll melodisch



81

6



85

Moll-natürlich



89

Moll-harmonisch



93

Moll melodisch



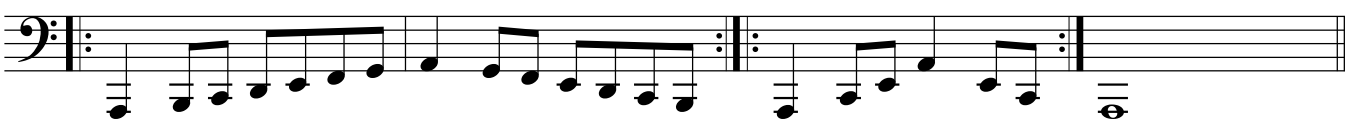
97

7



101

Moll-natürlich



105

Moll-harmonisch



109

Moll melodisch



8

ad. lib.

113

117

Moll-natürlich

121

Moll-harmonisch

125

Moll melodisch

9

129

133

Moll-natürlich

137

Moll-harmonisch

141

Moll melodisch

9 A

145

149

Moll-natürlich

153

Moll-harmonisch

Musical staff for Moll-harmonisch exercise starting at measure 153. The staff is in bass clef with a key signature of three flats (B-flat, E-flat, A-flat). The exercise consists of a sequence of eighth notes and quarter notes, with a repeat sign at the end.

157

Moll melodisch

JMLA-Silber Tonleitern / Posaune-Bariton in C

Musical staff for Moll melodisch exercise starting at measure 157. The staff is in bass clef with a key signature of three flats. The exercise consists of a sequence of eighth notes and quarter notes, with a repeat sign at the end.

Chromatische Tonleitern

161

1

Musical staff 1 for Chromatische Tonleitern exercise starting at measure 161. The staff is in bass clef with a key signature of three flats. The exercise consists of a sequence of eighth notes, with a repeat sign at the end.

165

2

Musical staff 2 for Chromatische Tonleitern exercise starting at measure 165. The staff is in bass clef with a key signature of three flats. The exercise consists of a sequence of eighth notes, with a repeat sign at the end.

169

3

Musical staff 3 for Chromatische Tonleitern exercise starting at measure 169. The staff is in bass clef with a key signature of three flats. The exercise consists of a sequence of eighth notes, with a repeat sign at the end.

173

4

Musical staff 4 for Chromatische Tonleitern exercise starting at measure 173. The staff is in bass clef with a key signature of three flats. The exercise consists of a sequence of eighth notes, with a repeat sign at the end.

177

5

Musical staff 5 for Chromatische Tonleitern exercise starting at measure 177. The staff is in bass clef with a key signature of three flats. The exercise consists of a sequence of eighth notes, with a repeat sign at the end.

Alternativen für 2 Oktaven

181

Musical staff 1 for Alternativen für 2 Oktaven exercise starting at measure 181. The staff is in bass clef with a key signature of three flats. The exercise consists of a sequence of eighth notes, with a repeat sign at the end.

184

Musical staff 2 for Alternativen für 2 Oktaven exercise starting at measure 184. The staff is in bass clef with a key signature of three flats. The exercise consists of a sequence of eighth notes, with a repeat sign at the end.

188

Musical staff 3 for Alternativen für 2 Oktaven exercise starting at measure 188. The staff is in bass clef with a key signature of three flats. The exercise consists of a sequence of eighth notes, with a repeat sign at the end.

191

Musical staff 4 for Alternativen für 2 Oktaven exercise starting at measure 191. The staff is in bass clef with a key signature of three flats. The exercise consists of a sequence of eighth notes, with a repeat sign at the end.