

Acher - Renchtal - Musikverband

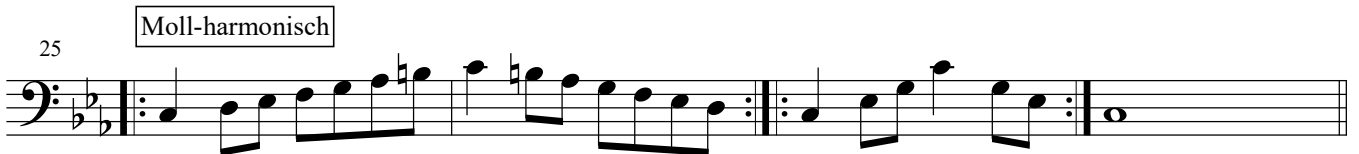
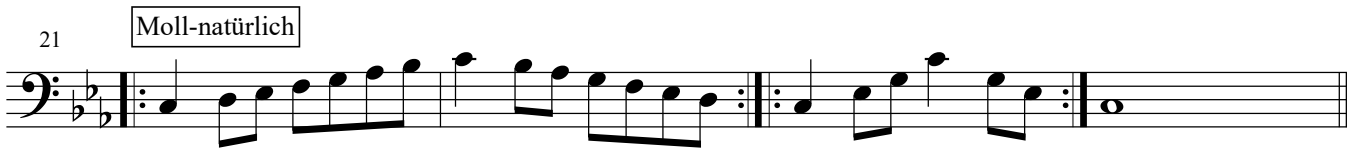
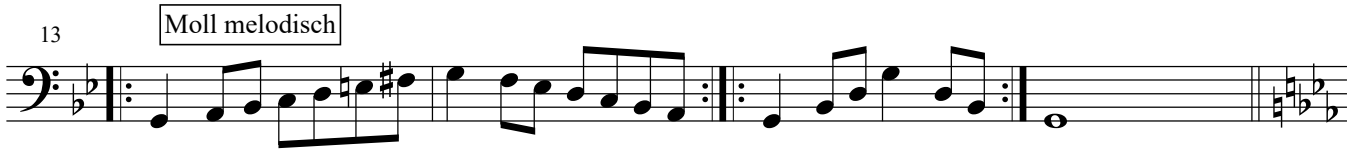
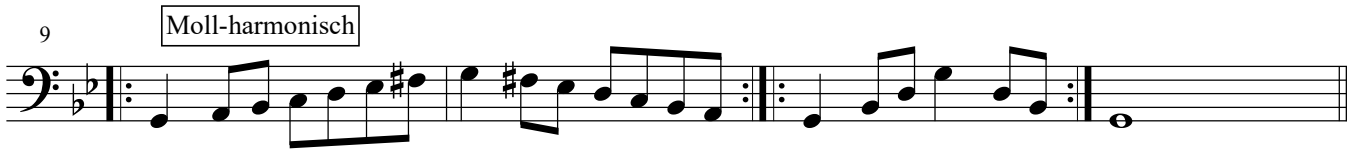
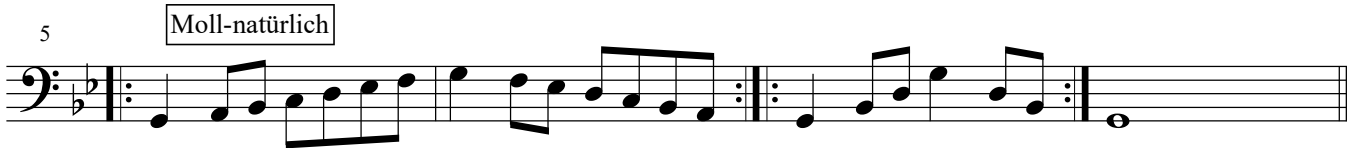
JMLA - Silber

Posaune
Euphonium

Dur-Tonleitern in der Vorspiel-Fassung
mit den dazugehörigen Moll-Tonleitern
(Für das gemeinsame Spiel aller JMLA-TN)

zusammengestellt von
Rudolf Heidler (2021)
Verbandsdirigent

$\text{♩} = 76 - 112$



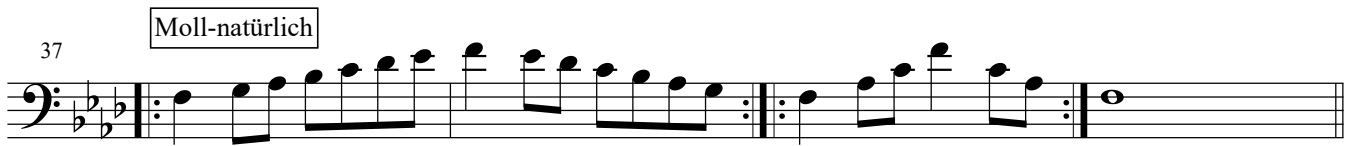
33

3



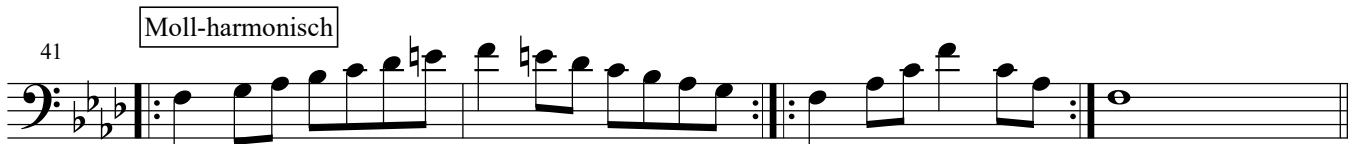
37

Moll-natürlich



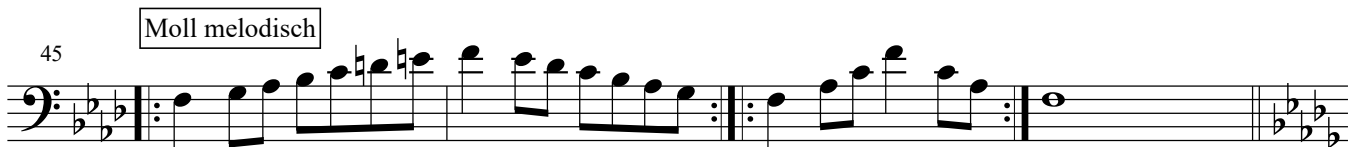
41

Moll-harmonisch



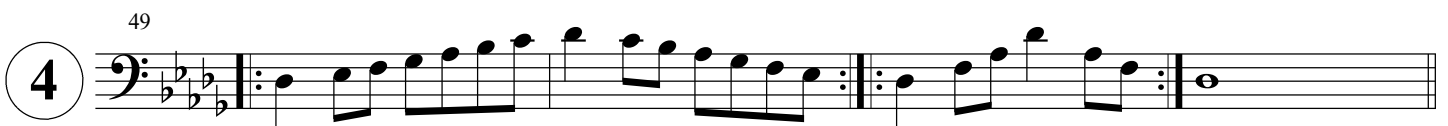
45

Moll melodisch



49

4



53

Moll-natürlich



57

Moll-harmonisch



61

Moll melodisch



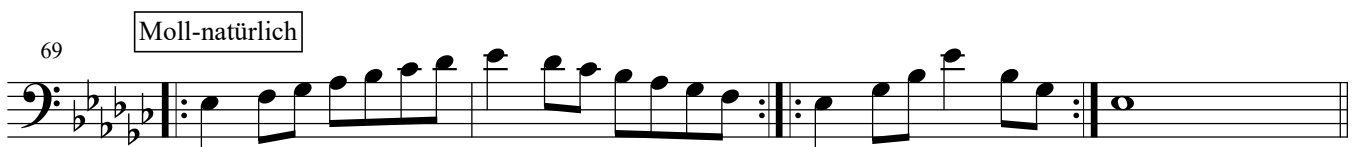
65

5



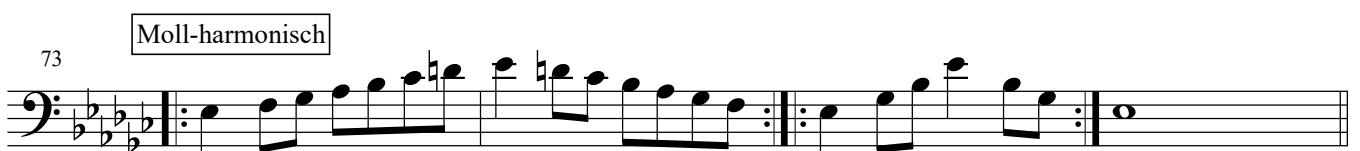
69

Moll-natürlich



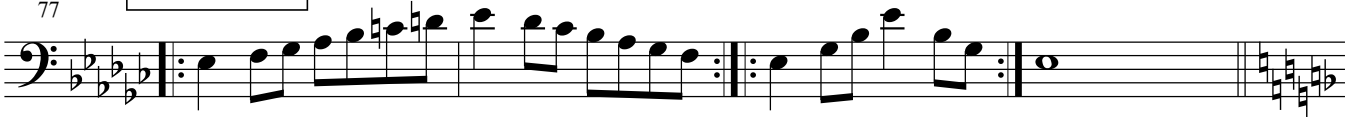
73

Moll-harmonisch



77

Moll melodisch



81

6



85

Moll-natürlich



89

Moll-harmonisch



93

Moll melodisch



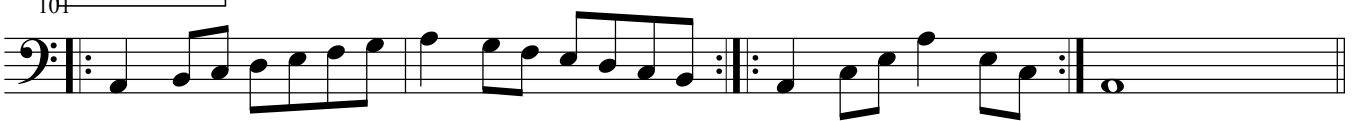
97

7



101

Moll-natürlich



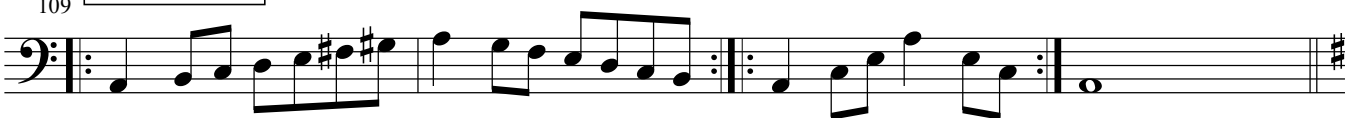
105

Moll-harmonisch



109

Moll melodisch



8

ad. lib.

113

Staff 113-116: Bass clef, key signature of one sharp (F#). The staff contains a melodic line with eighth and sixteenth notes, followed by a whole note chord at the end.

117

Moll-natürlich

Staff 117-120: Bass clef, key signature of one sharp (F#). The staff contains a melodic line with eighth and sixteenth notes, followed by a whole note chord at the end.

121

Moll-harmonisch

Staff 121-124: Bass clef, key signature of one sharp (F#). The staff contains a melodic line with eighth and sixteenth notes, followed by a whole note chord at the end.

125

Moll melodisch

Staff 125-128: Bass clef, key signature of one sharp (F#). The staff contains a melodic line with eighth and sixteenth notes, followed by a whole note chord at the end.

9

129

Staff 129-132: Bass clef, key signature of one sharp (F#). The staff contains a melodic line with eighth and sixteenth notes, followed by a whole note chord at the end.

133

Moll-natürlich

Staff 133-136: Bass clef, key signature of one sharp (F#). The staff contains a melodic line with eighth and sixteenth notes, followed by a whole note chord at the end.

137

Moll-harmonisch

Staff 137-140: Bass clef, key signature of one sharp (F#). The staff contains a melodic line with eighth and sixteenth notes, followed by a whole note chord at the end.

141

Moll melodisch

Staff 141-144: Bass clef, key signature of one sharp (F#). The staff contains a melodic line with eighth and sixteenth notes, followed by a whole note chord at the end.

9 A

145

Staff 145-148: Bass clef, key signature of two flats (Bb, Eb). The staff contains a melodic line with eighth and sixteenth notes, followed by a whole note chord at the end.

149

Moll-natürlich

Staff 149-152: Bass clef, key signature of two flats (Bb, Eb). The staff contains a melodic line with eighth and sixteenth notes, followed by a whole note chord at the end.

153

Moll-harmonisch



157

Moll melodisch

JMLA-Silber Tonleitern / Posaune-Bariton in C



Chromatische Tonleitern

161



165



169



173



177



Alternativen für 2 Oktaven

181



184



188



191

