

Acher - Renchtal - Musikverband

JMLA - Silber

Trompete
Ten.-Horn

Dur-Tonleitern in der Vorspiel-Fassung
mit den dazugehörigen Moll-Tonleitern
(Für das gemeinsame Spiel aller JMLA-TN)

zusammengestellt von
Rudolf Heidler (2021)
Verbandsdirigent

♩ = 76 - 112

1

5

Moll-natürlich

9

Moll-harmonisch

13

Moll melodisch

2

21

Moll-natürlich

25

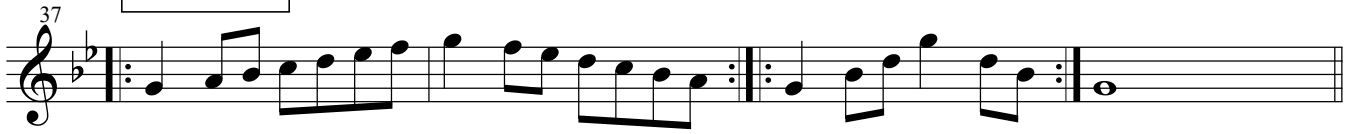
Moll-harmonisch

29

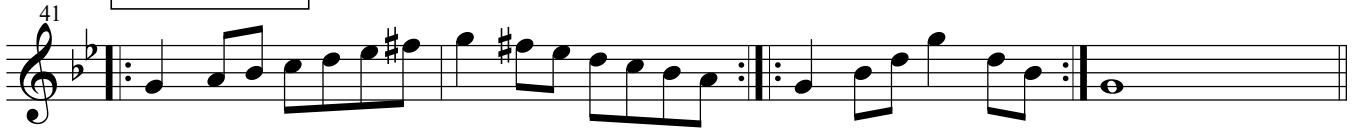
Moll melodisch

3 


Moll-natürlich

37 

Moll-harmonisch

41 

Moll melodisch

45 

4 

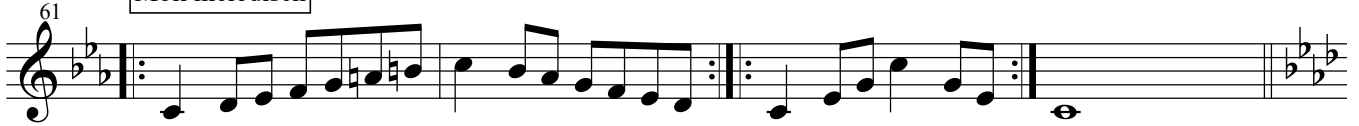
Moll-natürlich

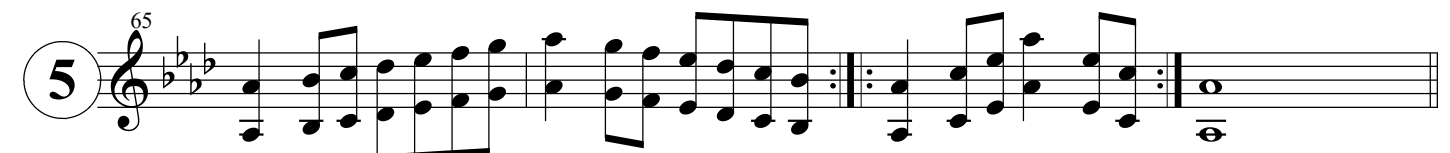
53 

Moll-harmonisch

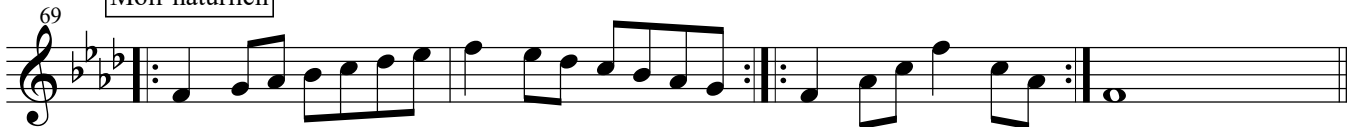
57 

Moll melodisch

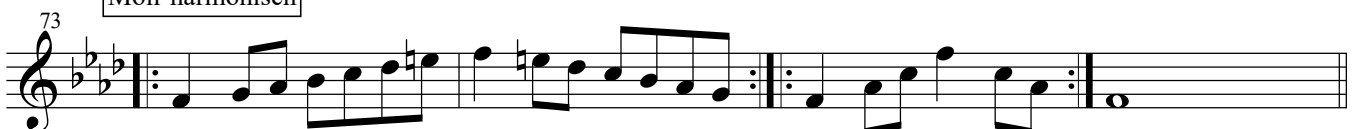
61 

5 

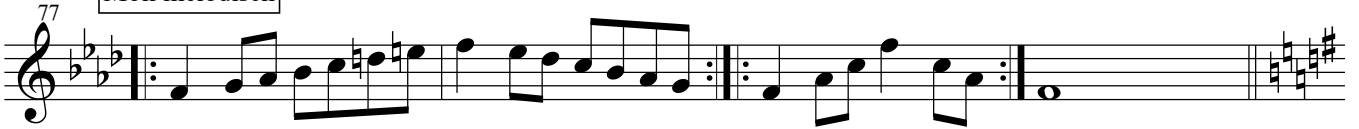
Moll-natürlich

69 

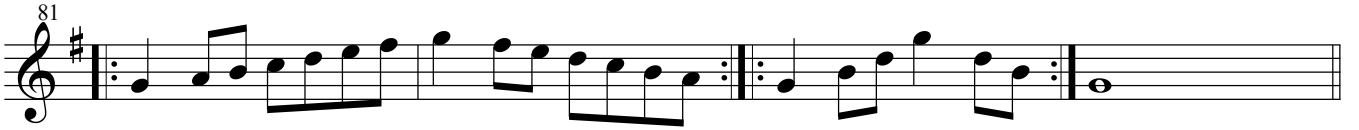
Moll-harmonisch

73 

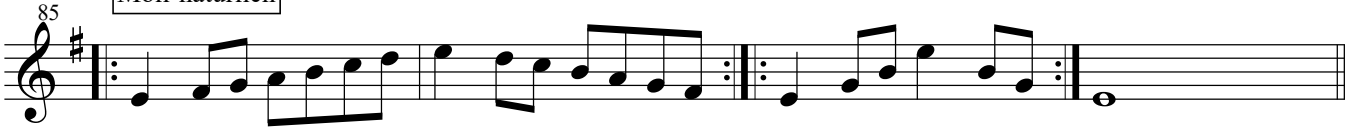
Moll melodisch



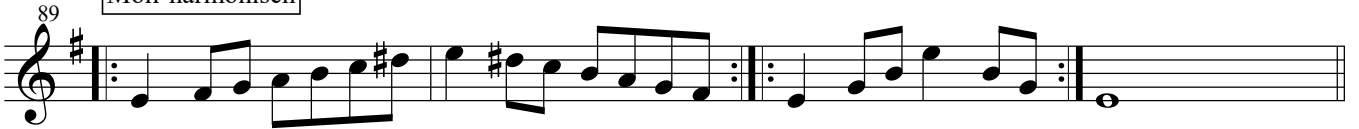
6



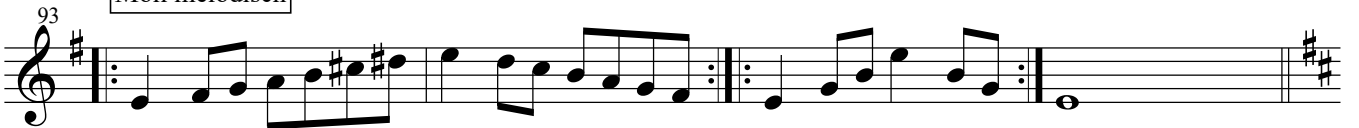
Moll-natürlich



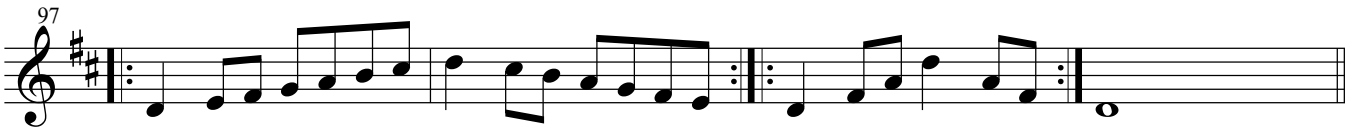
Moll-harmonisch



Moll melodisch



7



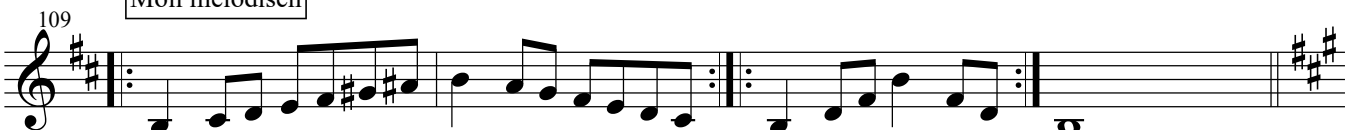
Moll-natürlich



Moll-harmonisch



Moll melodisch



8

ad. lib. Ten-Horn

113

Moll-natürlich

117

Moll-harmonisch

121

Moll melodisch

125

9

129

Moll-natürlich

133

Moll-harmonisch

137

Moll melodisch

141

9 A

145

Moll-natürlich

149

Moll-harmonisch

Musical notation for Moll-harmonisch, starting at measure 153. The staff shows a sequence of notes with accidentals, including a double bar line and repeat signs.

Moll melodisch

Musical notation for Moll melodisch, starting at measure 157. The staff shows a sequence of notes with accidentals, including a double bar line and repeat signs.

Chromatische Tonleitern

1 Musical notation for chromatic scale 1, starting at measure 161. The staff shows a sequence of notes with accidentals, including a double bar line and repeat signs.

2 Musical notation for chromatic scale 2, starting at measure 165. The staff shows a sequence of notes with accidentals, including a double bar line and repeat signs.

3 Musical notation for chromatic scale 3, starting at measure 169. The staff shows a sequence of notes with accidentals, including a double bar line and repeat signs.

4 Musical notation for chromatic scale 4, starting at measure 173. The staff shows a sequence of notes with accidentals, including a double bar line and repeat signs.

5 Musical notation for chromatic scale 5, starting at measure 177. The staff shows a sequence of notes with accidentals, including a double bar line and repeat signs.

Alternativen für 2 Oktaven

Musical notation for alternative 1, starting at measure 181. The staff shows a sequence of notes with accidentals, including a double bar line and repeat signs.

Musical notation for alternative 2, starting at measure 184. The staff shows a sequence of notes with accidentals, including a double bar line and repeat signs.

Musical notation for alternative 3, starting at measure 188. The staff shows a sequence of notes with accidentals, including a double bar line and repeat signs.

Musical notation for alternative 4, starting at measure 191. The staff shows a sequence of notes with accidentals, including a double bar line and repeat signs.