

Acher - Renchtal - Musikverband

JMLA - Silber

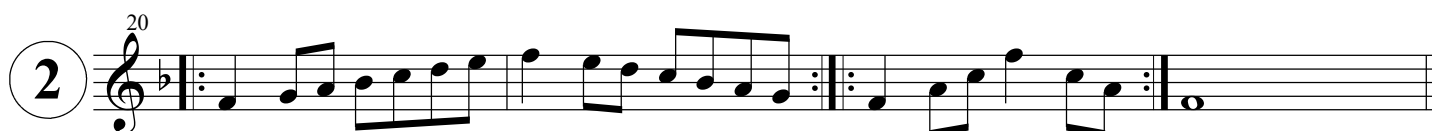
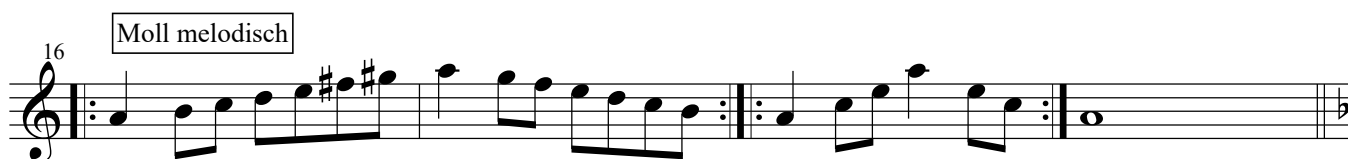
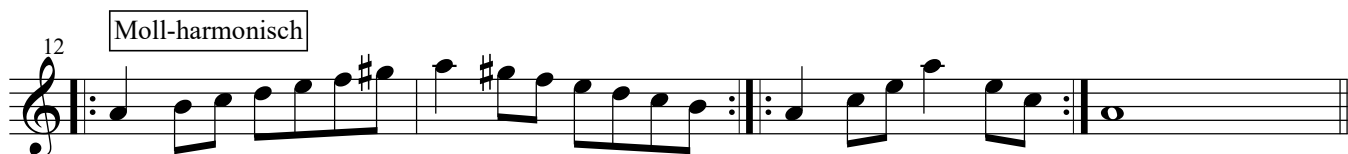
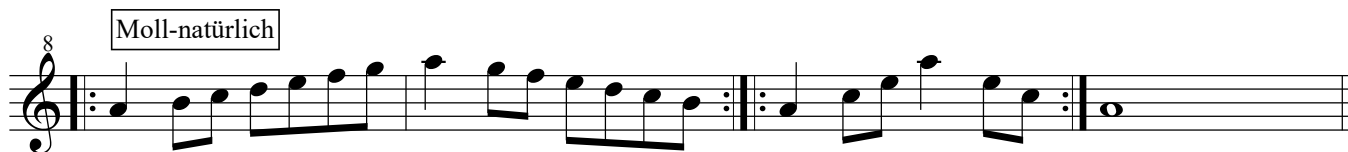
Ten-Sax.

Dur-Tonleitern in der Vorspiel-Fassung
mit den dazugehörigen Moll-Tonleitern
Chromatische Tonleitern

zusammengestellt von
Rudolf Heidler (2021)
Verbandsdirigent

(Für das gemeinsame Spiel aller JMLA-TN)

$\text{♩} = 76 - 112$



Moll-harmonisch



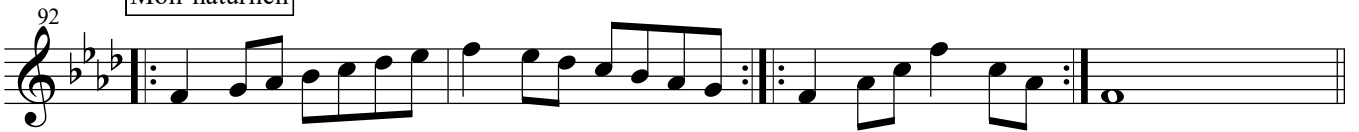
Moll melodisch



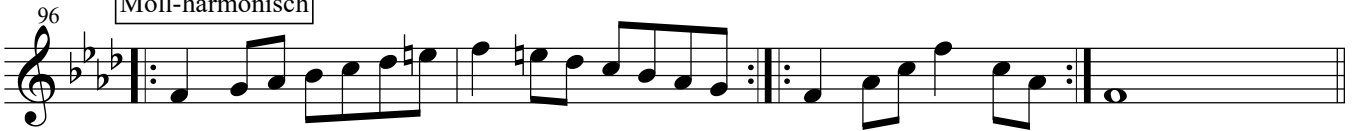
5



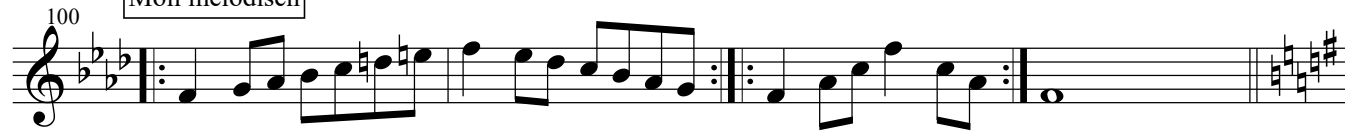
Moll-natürlich



Moll-harmonisch



Moll melodisch



6



Moll-natürlich



Moll-harmonisch

115

118

Moll melodisch

122

125

7

129

132

Moll-natürlich

136

Moll-harmonisch

140

Moll melodisch

144

8

148

Moll-natürlich

152

Musical staff for Moll-natürlich starting at measure 152. The key signature has three sharps (F#, C#, G#). The melody consists of eighth and quarter notes, ending with a whole note.

Moll-harmonisch

156

Musical staff for Moll-harmonisch starting at measure 156. The key signature has three sharps (F#, C#, G#). The melody includes some chromatic alterations, ending with a whole note.

Moll melodisch

160

Musical staff for Moll melodisch starting at measure 160. The key signature has three sharps (F#, C#, G#). The melody is more melodic with some chromaticism, ending with a whole note.

9

164

Musical staff for exercise 9 starting at measure 164. The key signature has four sharps (F#, C#, G#, D#). The melody is a simple eighth-note scale, ending with a whole note.

167

Musical staff for exercise 9 starting at measure 167. The key signature has four sharps (F#, C#, G#, D#). The melody continues the eighth-note scale, ending with a whole note.

Moll-natürlich

171

Musical staff for Moll-natürlich starting at measure 171. The key signature has four sharps (F#, C#, G#, D#). The melody consists of eighth and quarter notes, ending with a whole note.

Moll-harmonisch

175

Musical staff for Moll-harmonisch starting at measure 175. The key signature has four sharps (F#, C#, G#, D#). The melody includes chromatic alterations, ending with a whole note.

Moll melodisch

179

Musical staff for Moll melodisch starting at measure 179. The key signature has four sharps (F#, C#, G#, D#). The melody is more melodic with chromaticism, ending with a whole note.

9 A

183

Musical staff for exercise 9 A starting at measure 183. The key signature has four flats (Bb, Eb, Ab, Db). The melody is a simple eighth-note scale, ending with a whole note.

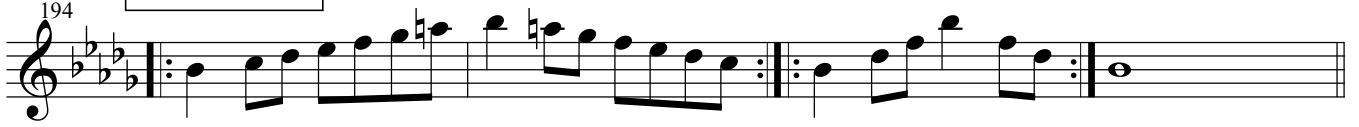
186

Musical staff for exercise 9 A starting at measure 186. The key signature has four flats (Bb, Eb, Ab, Db). The melody continues the eighth-note scale, ending with a whole note.

Moll-natürlich



Moll-harmonisch



Moll melodisch



Chromatische Tonleitern

1



2



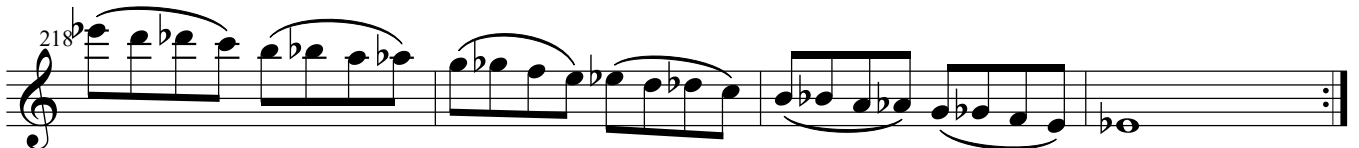
210



3



218



4



5

