

Acher - Renchtal - Musikverband JMLA - Silber

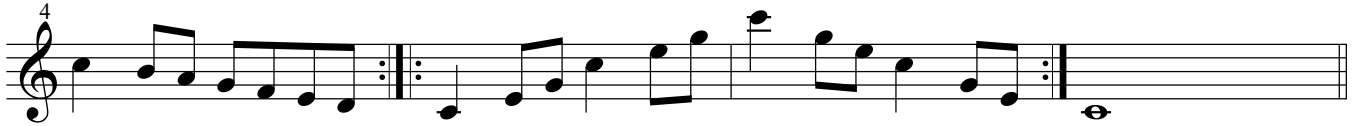
Dur-Tonleitern in der Vorspiel-Fassung
mit den dazugehörigen Moll-Tonleitern
Chromatische Tonleitern
(Für das gemeinsame Spiel aller JMLA-TN)

zusammengestellt von
Rudolf Heidler (2021)
Verbandsdirigent

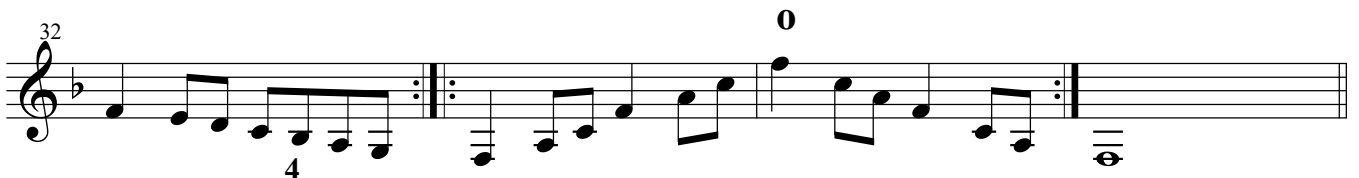
Klarinette

$\text{♩} = 76 - 112$

1



2



Moll-natürlich

36

39

Moll-harmonisch

43

46

Moll melodisch

50

53

3

57

60

Moll-natürlich

64

67

Moll melodisch

106 4 0 2 0

109 4 2 2

5 113 0 2 N 0 0 N

116 2 0 2 2

Moll-natürlich

120 0 2 N 0 N

123 2 0 0

Moll-harmonisch

127 N 4 N

130 0 0

Moll melodisch

134 0 0 N

137 2 0 0

6 Musical staff 141-143: Treble clef, key signature of two sharps (F# and C#). The staff contains a melodic line starting with a repeat sign and ending with a double bar line.

144 Musical staff 144-147: Treble clef, key signature of two sharps. The staff contains a melodic line with repeat signs and a final whole note chord.

Moll-natürlich Musical staff 148-150: Treble clef, key signature of two sharps. The staff contains a melodic line with repeat signs.

151 Musical staff 151-154: Treble clef, key signature of two sharps. The staff contains a melodic line with repeat signs.

Moll-harmonisch Musical staff 155-157: Treble clef, key signature of two sharps. The staff contains a melodic line with repeat signs.

158 Musical staff 158-161: Treble clef, key signature of two sharps. The staff contains a melodic line with repeat signs.

Moll melodisch Musical staff 162-164: Treble clef, key signature of two sharps. The staff contains a melodic line with repeat signs and a dynamic marking 'L'.

165 Musical staff 165-168: Treble clef, key signature of two sharps. The staff contains a melodic line with repeat signs.

7 Musical staff 169-171: Treble clef, key signature of two sharps. The staff contains a melodic line with repeat signs and a dynamic marking 'L'.

172 Musical staff 172-175: Treble clef, key signature of two sharps. The staff contains a melodic line with repeat signs and a dynamic marking 'L'.

Moll-natürlich

176

179

Moll-harmonisch

183

186

Moll melodisch

190

193

8 197

200

Moll-natürlich

204

207

211 Moll-harmonisch

Z

214

218 Moll melodisch

Z

221

9 225

228

232 Moll-natürlich

Z

235

239 Moll-harmonisch

Z

242

Moll melodisch

246

2 N

249

N 2 N N

9 A

253

2 N 0 2 2 0

256

N 2 N N

Moll-natürlich

260

2 N 0 0 0 N

263

2 N 0 N

Moll-harmonisch

267

2 N 0 4 0 N

270

2 N 0 N

Moll melodisch

274

2 N 0 2 0 N

277

2 N 0 N

Chromatische Tonleitern

1

Exercise 1, measures 281-288. The first staff (measures 281-284) features a chromatic scale in G major with a slur and a '4' above it. The second staff (measures 285-288) features a chromatic scale in G minor with a slur and a '4' above it. Both staves include a 'N' marking above the notes.

2

Exercise 2, measures 289-296. The first staff (measures 289-292) features a chromatic scale in D major with a slur and a '4' above it. The second staff (measures 293-296) features a chromatic scale in D minor with a slur and a '4' above it. Both staves include a 'N' marking above the notes.

3

Exercise 3, measures 297-304. The first staff (measures 297-300) features a chromatic scale in A major with a slur and a '4' above it. The second staff (measures 301-304) features a chromatic scale in A minor with a slur and a '4' above it. Both staves include a 'N' marking above the notes.

4

Exercise 4, measures 305-312. The first staff (measures 305-308) features a chromatic scale in E major with a slur and a '4' above it. The second staff (measures 309-312) features a chromatic scale in E minor with a slur and a '4' above it. Both staves include a 'N' marking above the notes.

5

313

4 4 N 4

317

4 N 4 4

Alternative für 2 Oktaven

321

4 4 N 4

324

4 N 4 4

328

N 4 4 N

331

4 4 4 4 N

335

4 4 N