

Acher - Renchtal - Musikverband

JMLA - Silber

Dur-Tonleitern in der Vorspiel-Fassung
mit den dazugehörigen Moll-Tonleitern
Chromatische Tonleitern
(Für das gemeinsame Spiel aller JMLA-TN)

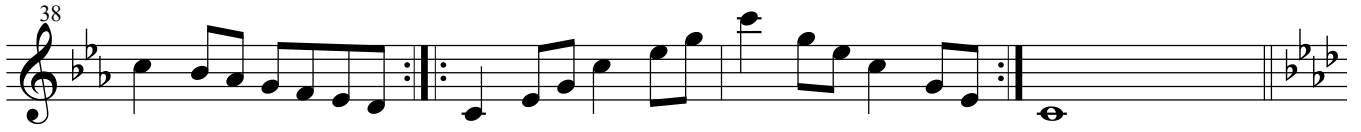
zusammengestellt von
Rudolf Heidler (2021)
Verbandsdirigent

Oboe

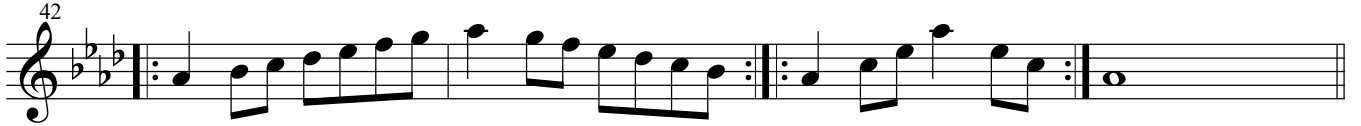
$\text{♩} = 76 - 112$

1

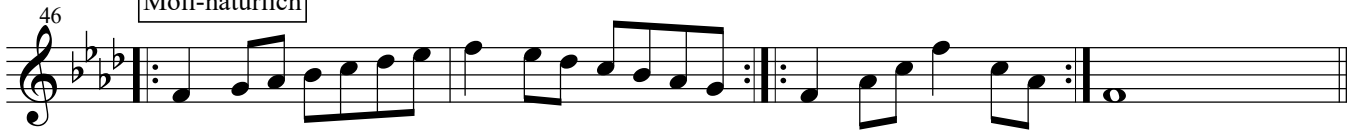
Moll melodisch



3



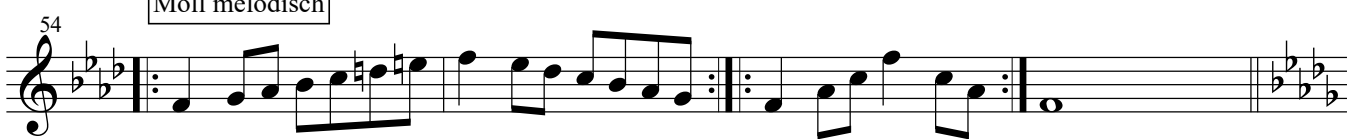
Moll-natürlich



Moll-harmonisch



Moll melodisch



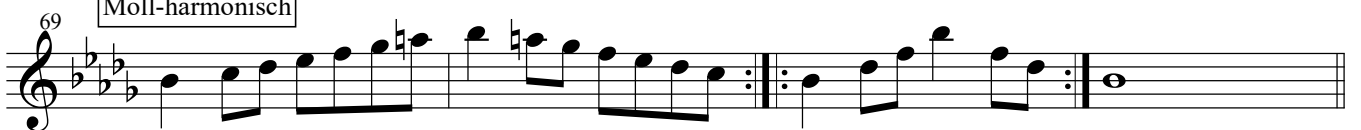
4



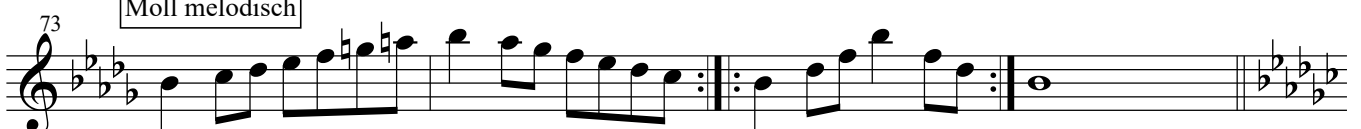
Moll-natürlich



Moll-harmonisch



Moll melodisch



5

Musical staff starting at measure 77, featuring a melodic line in a minor key with a key signature of three flats. The staff contains a sequence of eighth and quarter notes, ending with a whole note.

Moll-natürlich

Musical staff starting at measure 81, labeled 'Moll-natürlich'. It continues the melodic sequence from the previous staff.

Moll-harmonisch

Musical staff starting at measure 85, labeled 'Moll-harmonisch'. The melody includes some chromatic alterations.

Moll melodisch

Musical staff starting at measure 89, labeled 'Moll melodisch'. The melody is more expressive with some grace notes.

6

Musical staff starting at measure 93, continuing the melodic sequence.

Moll-natürlich

Musical staff starting at measure 97, labeled 'Moll-natürlich'. The melody features a series of eighth notes.

Musical staff starting at measure 100, continuing the melodic sequence.

Moll-harmonisch

Musical staff starting at measure 104, labeled 'Moll-harmonisch'. The melody includes chromatic alterations.

Musical staff starting at measure 107, continuing the melodic sequence.

Moll melodisch

Musical staff starting at measure 111, labeled 'Moll melodisch'. The melody is more expressive with some grace notes.

Musical staff starting at measure 114, continuing the melodic sequence.

7

118

121

Moll-natürlich

125

Moll-natürlich

129

Moll-harmonisch

133

Moll melodisch

8

137

Moll-natürlich

141

Moll-harmonisch

145

Moll melodisch

149

9

153

156

160 Moll-natürlich

164 Moll-harmonisch

168 Moll melodisch

9 A 172

176 Moll-natürlich

180 Moll-harmonisch

184 Moll melodisch

Chromatische Tonleitern

1 188


2 192

3



196

Musical staff 3, measures 196-202. Treble clef, key signature of one sharp (F#). The staff contains six measures of music with various note values and slurs.



199

Musical staff 3, measures 199-205. Treble clef, key signature of one sharp (F#). The staff contains six measures of music with various note values and slurs.

4



203

Musical staff 4, measures 203-209. Treble clef, key signature of one sharp (F#). The staff contains six measures of music with various note values and slurs.

5



207

Musical staff 5, measures 207-213. Treble clef, key signature of one sharp (F#). The staff contains six measures of music with various note values and slurs.

Alternative für 2 Oktaven



211

Musical staff 6, measures 211-217. Treble clef, key signature of one sharp (F#). The staff contains six measures of music with various note values and slurs.




214

Musical staff 6, measures 214-220. Treble clef, key signature of one sharp (F#). The staff contains six measures of music with various note values and slurs.



218

Musical staff 6, measures 218-224. Treble clef, key signature of one sharp (F#). The staff contains six measures of music with various note values and slurs.



221

Musical staff 6, measures 221-227. Treble clef, key signature of one sharp (F#). The staff contains six measures of music with various note values and slurs.